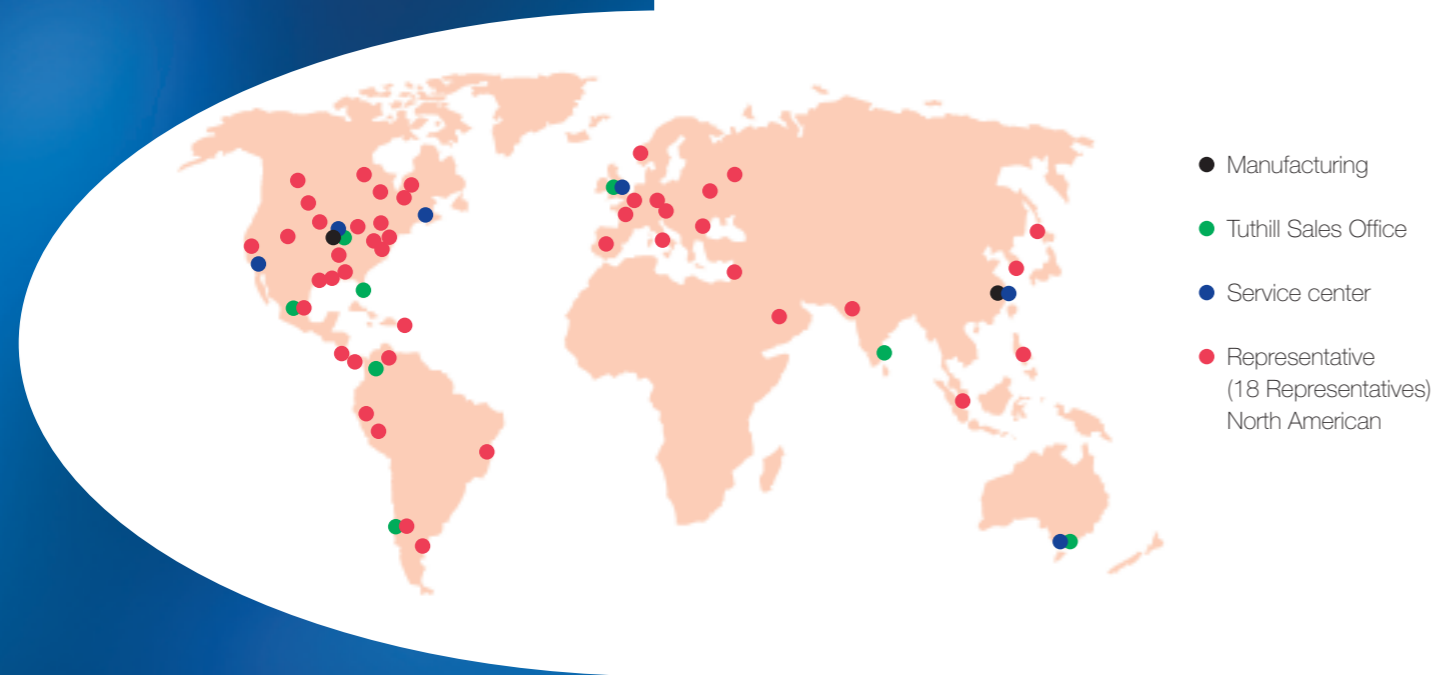


## The Complete Network

The Mission of Tuthill Vacuum & Blower Systems is to be a world-class manufacturer of vacuum and blower solutions. Our manufacturing & sales network throughout the United States; Europe & Asia is strategically located to ensure quick delivery and customer friendly support.



## The Complete Service

Tuthill Vacuum & Blower Systems has built its reputation on total customer support. We offer the very best in technical capability combined with a total service and maintenance function, strategically located throughout the United States, Europe and Asia. Each service center is staffed by specialists with considerable application know-how. They have original factory replacement parts in stock and are equipped with the tools, fixtures and special machinery necessary for vacuum booster & rotary piston pump repair. Tuthill offers scheduled maintenance contracts and service other brand vacuum boosters and vacuum pumps.



Tuthill Vacuum & Blower Systems  
4840 West Kearney Street  
Springfield MO 65803 USA

Telephone 417.865.8715 (800) 825-6937  
Facsimile 417.865.2950

Website: <http://vacuum.tuthill.com>  
E-Mail: [vacuum@tuthill.com](mailto:vacuum@tuthill.com)



06/07



Interchangeable with Stokes® Units

## The Complete Line of Vacuum Boosters & Rotary Piston Vacuum Pumps



Vacuum Furnace



Vacuum Coating



High Vacuum Oil Purification



Transformer Drying / Filling



Freeze Drying / Vacuum Cooling



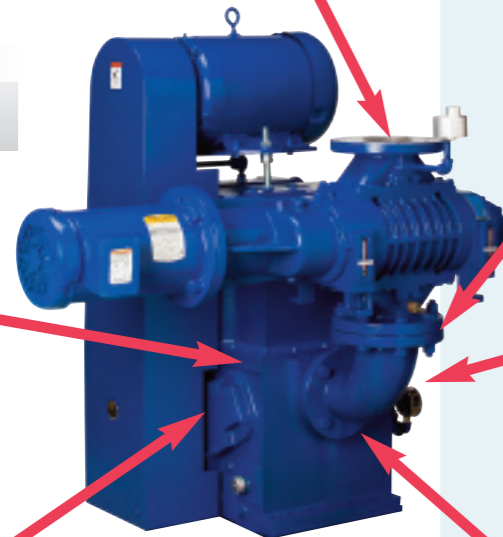
E-beam Welding



# The Complete Line of Vacuum Boosters and Rotary piston vacuum pumps

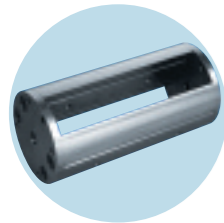
Tuthill Vacuum & Blower Systems supplies a complete range of standard or customized vacuum packages incorporating vacuum pumps, mechanical boosters, pipework and valves with system monitoring and control to suit your application requirements.

**Bypass Models**  
Bypass option available



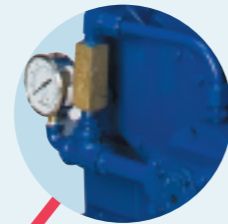
### Slide Pins

Our unique four sided slide pin prevents premature pump wear.



### External Piping

Maintenance friendly external piping saves maintenance downtime as compared to integral piping.



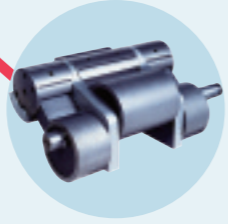
### Forced Feed Oil Pump

Standard forced feed oil pump ensures adequate lubrication at any pressure up to atmosphere.



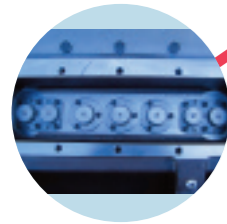
### Triplex Piston

Our dynamically balanced Tri-plex piston design allows for vibration-free operation.



### Discharge Valve Assembly

Stainless Steel valve assembly is standard, with special materials available Teflon coated valves and Titanium springs.



### Vibramount

Vibramounts create an essentially vibration free operation. No grouting, anchor bolts or special foundation required



**Trade-in Cash Back Program Available for your Stokes Units (for 2 Years)**

## Models Interchangeable with other Manufacturers

### Booster/Piston Systems

- Kinney pioneered the development of compound systems incorporating mechanical vacuum boosters in conjunction with rotary piston vacuum pumps
- Three service centers nationwide to serve domestic customers
- Worldwide sales & support
- Advanced replacement units

### Vacuum Booster / Rotary Piston Systems Cross reference

Tuthill Kinney Model	Displacement CFM	Stokes Model
MB6015L/KT150	1300/150	1721
MB6015M/KT150	1600/150	1721-S
MB6015L/KT300	1300/300	1722
MB6015M/KT300	1600/300	1722-S
MB6015H/KT300	2000/300	1738
MB6015HBP/KT300	2000/300	1738BP
MB2700/KT500	2700/500	—
CB4015	400/150	212MBX
CB4030	400/300	412MBX

L = Low RPM, M = Medium RPM, H = High RPM

### Piston Pumps

- All Tuthill Kinney rotary piston pumps are manufactured at our plant in Springfield, MO for better availability and stringent quality control
- Excellent durability
- Rotary piston "No metal to metal" contact in the chamber
- Less stress on inlet manifold due to vibration free operation
- Compact design reduces floor space by approximately 16%
- Versatile design options, low profile or vertical footprint depending on customer needs



### Rotary Piston Vacuum Pumps Cross reference

Tuthill Kinney Model	Displacement CFM	Stokes Model
KD30	30	146H
KD50	50	148H
KTLP170	100	149HS
KT150	150	212H*
KT300	300	412H/J*
KT500	500	-
KT850	780	912H*

\*Please consult factory for drop-in replacement drawings



### Vacuum Boosters

- Tuthill Kinney vacuum boosters are available with a variety of seal types including slinger, mechanical or lipseals
- Available in Horizontal & Vertical flow
- Design to operate at 82 dB(A) or less
- Interference fit with key reduces the risk of slippage of the gear on the shaft and loss of timing
- Heat treated and ground helical gears reduces backlash and mechanical noise
- Casings and end plates are cast iron, ductile iron rotors and shafts
- Optional materials and special coatings available
- Air cooled design, compatible with any backing pump
- Operating inlet pressure as low as 0.001 Torr
- Teflon filled polyamide seals keep contamination out of oil
- VFD configuration available for 6015
- Bolt In Replacement for Stokes 615
- 3600 RPM standard, no modifications necessary

### KMBD 6015



**Bypass version available, contact factory for details**

### Bare Shaft Vacuum Boosters Cross reference

Tuthill Kinney Model	Displacement CFM	Stokes Model
KMBD243/240	125/245	306
KMBD400	400	310
KMBD 1203/1200	600/950	607
KMBD 6015L/6015M/6015H	1300/1600/2000	615
KMBD6015BP	1300/2000	615BP

Bare shaft vacuum boosters available up to 10,540 cfm  
L = Low RPM, M = Medium RPM, H = High RPM